

CORRECTION

Open Access

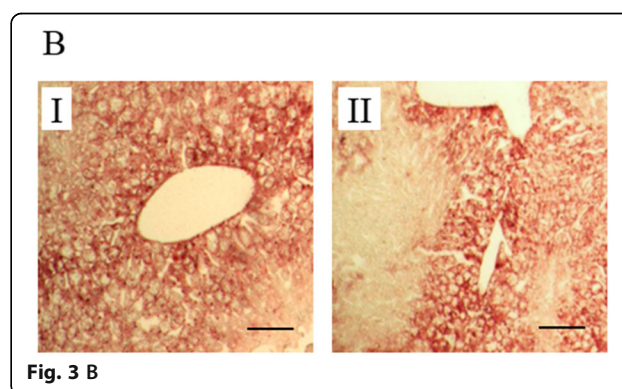


# Correction to: Chronic administration of palmitoleic acid reduces insulin resistance and hepatic lipid accumulation in KK-Ay Mice with genetic type 2 diabetes

Zhi-Hong Yang\*, Hiroko Miyahara and Akimasa Hatanaka

**Correction to: *Lipids Health Dis* 10, 120 (2011)**  
<https://doi.org/10.1186/1476-511X-10-120>

Following the publication of the original article [1], it has been found that Fig. 3B has an error of misplacement. In Fig. 3B, the images of Oil red O staining of liver sections from control (I) and palmitic acid (II) had been misplaced. The mistakes were caused by unintentionally misplacing the correct image during figure preparation. The mistakes have been corrected in the revised file Fig. 3B (I) and (II) below. Authors apologize for this error that was caused by unintentional mistake.



Published online: 24 August 2021

## Reference

1. Yang ZH, Miyahara H, Hatanaka A. Chronic administration of palmitoleic acid reduces insulin resistance and hepatic lipid accumulation in KK-Ay Mice with genetic type 2 diabetes. *Lipids Health Dis.* 2011;10:120 <https://doi.org/10.1186/1476-511X-10-120>.

The original article can be found online at <https://doi.org/10.1186/1476-511X-10-120>.

\* Correspondence: [yangzh@nissui.co.jp](mailto:yangzh@nissui.co.jp)

Central Research Laboratory, Tokyo Innovation Center, Nippon Suisan Kaisha, Ltd., 32-3 Nanakuni 1 Chome Hachioji, Tokyo 192-0991, Japan



© The Author(s). 2021 **Open Access** This article is licensed under a Creative Commons Attribution 4.0 International License, which permits use, sharing, adaptation, distribution and reproduction in any medium or format, as long as you give appropriate credit to the original author(s) and the source, provide a link to the Creative Commons licence, and indicate if changes were made. The images or other third party material in this article are included in the article's Creative Commons licence, unless indicated otherwise in a credit line to the material. If material is not included in the article's Creative Commons licence and your intended use is not permitted by statutory regulation or exceeds the permitted use, you will need to obtain permission directly from the copyright holder. To view a copy of this licence, visit <http://creativecommons.org/licenses/by/4.0/>. The Creative Commons Public Domain Dedication waiver (<http://creativecommons.org/publicdomain/zero/1.0/>) applies to the data made available in this article, unless otherwise stated in a credit line to the data.